



BEVI FLAVORED WATER DISPENSER

Pour something good.

bevi®

FEATURES

- 🔄 **WATER WITH POP** – Add a variety of both sweetened and unsweetened flavors to your water. Options range from lemon seltzer to organically sweetened blueberry-cucumber water.
- 🔄 **ACTIVATED CARBON FILTRATION** – Improve water quality with our filtration system, which removes over 99% of lead and 98% of chlorine from tap water.
- 🔄 **AUTOMATED RESTOCKING** – Never place an order for beverages (unless you want to switch up your flavors)! We track when beverages run out or when a filter needs changing, and replace inventory proactively. Our professional servicing team will handle the heavy lifting for you.
- 🔄 **LOWER CARBON FOOTPRINT** – Achieve sustainability goals by reducing plastic and energy waste. Our point-of-use system not only makes it easy to reuse bottles, but also entirely eliminates the fuel-intensive transportation of full beverage bottles.



SPECIFICATIONS

- 🔄 **MODEL:** Bevi
- 🔄 **DIMENSIONS:** 22"D x 61"H x 22"W
- 🔄 **POWER:** 4 Amps
- 🔄 **OUTLET:** 100-240V



OFFICE SIZE



EASE OF USE



VARIETY



VALUE





BEVI FLAVORED WATER DISPENSER

Pour something good.

bevi®

BEVI FLAVOR OFFERINGS



BLACKBERRY LIME
(unsweetened)



BLACK CHERRY



COCONUT
(unsweetened)



CUCUMBER
(unsweetened)



GRAPEFRUIT
(unsweetened)



KEY LIME
(unsweetened)



LEMON LIME



LIME MINT
(unsweetened)



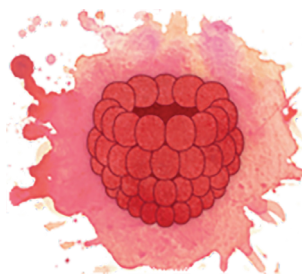
LEMON
(unsweetened)



PEACH MANGO
(unsweetened)



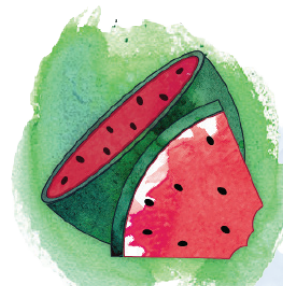
PEACH
(unsweetened)



RASPBERRY
(unsweetened)



STRAWBERRY LEMONGRASS



WATERMELON
(unsweetened)



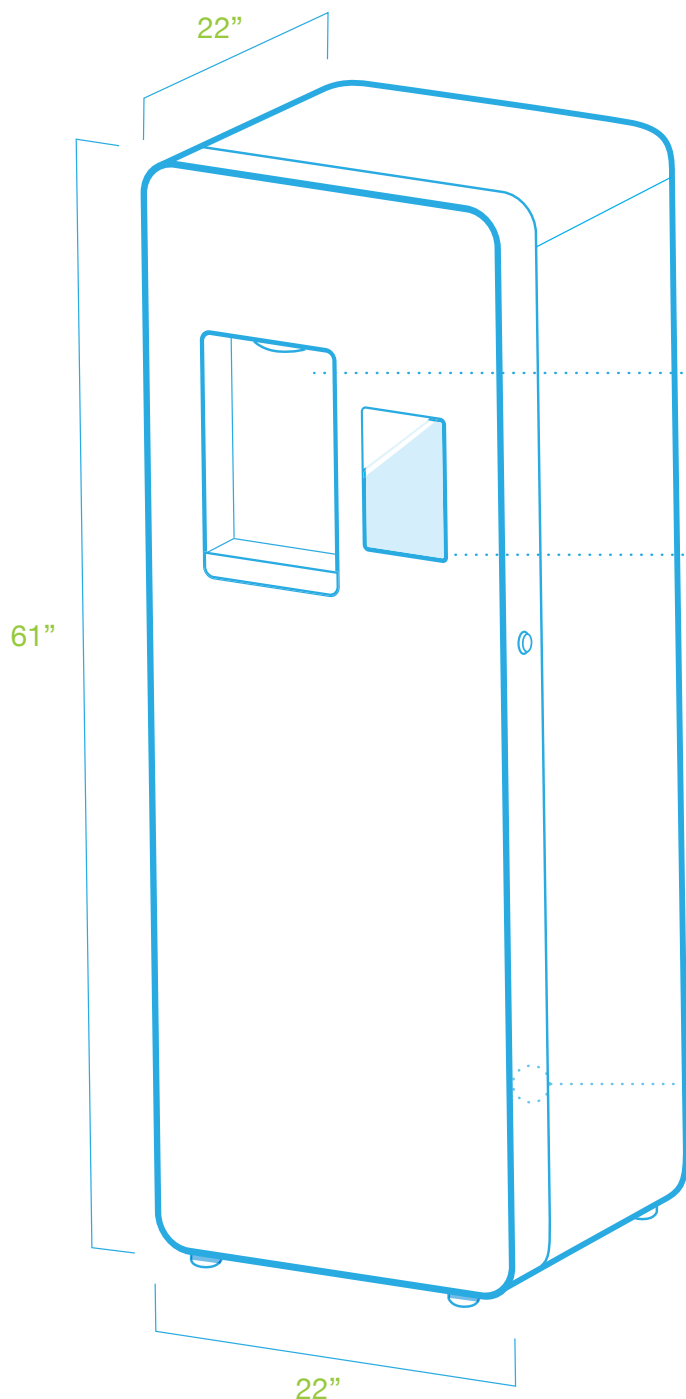


BEVI FLAVORED WATER DISPENSER

Pour something good.

bevi®

DIAGRAM



REFILL STATION

Our machine accepts any container. With our single-nozzle design and LED lighting, filling up is clean and easy.

TOUCHSCREEN DISPENSE

This is where a user selects their custom drink.

WATER/POWER SUPPLY

- 3/8" outer-diameter water line with either a compression fitting or push-to-connect fitting
- 100-240V power outlet
- 4 amps current

